

**Hydraulic Shearing Machine : QC12K**



**QC12K series hydraulic swing bam shearing machine**

**Product introduction**

- Overall steel welding structure, hydraulic drive pendulum type tool holder, tool holder tempering treatment, durable, high precision.
- Returns by nitrogen cylinder, stable and rapid.
- The clearance adjustment of the blade is indicated by indicator, easy adjustment and step-less adjustment.
- Equipped with the light to line device, and can adjust stroke of upper tool holder step-less.
- Fence type safety protection device.
- Back-gauge is controlled by CNC system, which is simple and convenient.
- Domestic famous brand hydraulic integration system.





## Front Arms

Roller ball is installed on the arm with ruler can reduce the abrasion and feeder the machine easily and accurately.

## Pump

famous brand for hydraulic pump performs well and provides great power for the whole hydraulic system.



## Valve

## Backguage



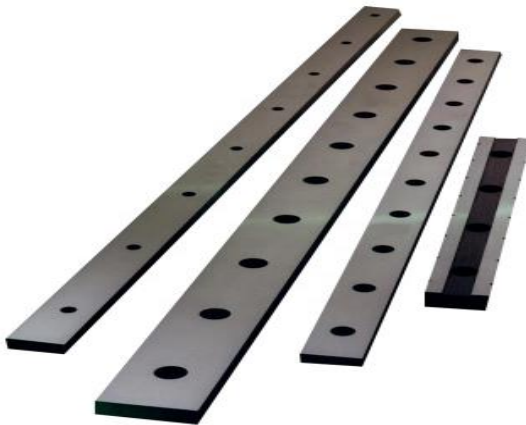
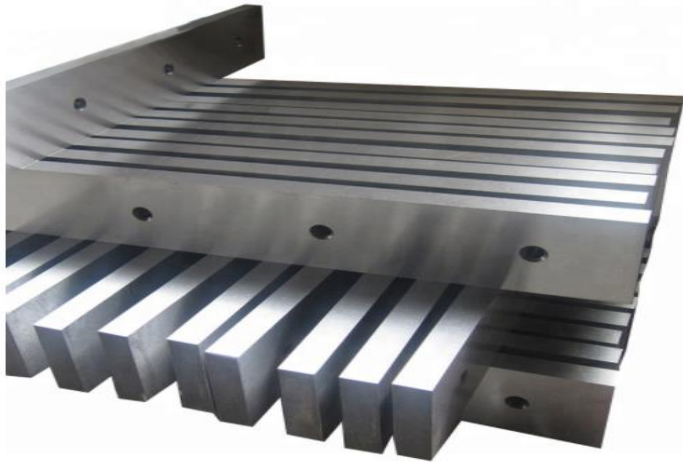
## Blade clearance adjustment

Adjust the cutting blades gap by motor according the cutting thickness of the metal sheet can get better cutting performance.

## Hydraulic system



# Hot shear blades for shear



## Press brake CNC system E21 : LCD Display, 240x128;



### E21

- Multi-step programming, program automatic operation, continuous positioning;
- Automatic regress to avoid the interference of backstop and workpiece;
- One-way positioning to eliminate the gap of screw drive;
- Inch/mm selection;
- Position compensation;
- Power failure, memory function;

## DA41 : High resolution LCD display;



### DA41

- Block stop position control;
- Backstop control;
- Angle programming;
- Mold parameter setting;
- Nesting control function;
- 100 programs;
- Each program has 25 steps;

## DA52S : One page of parametric programming;



- 6.4" LCD real color TF display
- Working table deflection compensation control;
- Mold library;
- The second axis control is optional;
- USB interface;
- The advanced Y-axis control algorithm can control the closed loop valve and open loop valve;
- Servo control, frequency conversion control and AC control are optional;
- Panel structure;



## DA56S

### DA56S : 2D programming;

- 10.4"LCD TFT color display;
- Bending process will be told;
- Length calculation;
- Compensation for deformation of worktable;
- USB interface;
- Servo control. Frequency conversion control and AC motor control



## DA66T

### DA66T :2D touch graphic programming;

- 3D products simulation display;
- 17" high resolution TFT real color display;
- Full Windows application;
- Compatible with DELEM modular structure;
- USB peripheral interface;
- User program application in multi-task environment;
- Angle detection sensor interface;



## DA69T

### DA69T : 2D/3D graphics programming

- 3D graphics display;
- 12" TFT real color display;
- Touch screen;
- Integrated operation panel;
- Integrated standard USB floppy drive;
- USB keyboard and mouse interface;
- Support user professional application in multi-task environment;
- Angle calibration sensor interface.

## TECHINCAL PARAMETERS QC12Y/QC12K

| MODEL   | THICKNESS/<br>MM. | WIDTH/MM | SHEARING<br>ANGLE | THROAT<br>DEPTH<br>/MM. | BACKGAU<br>GE RANGE<br>/MM. | STROKES<br>CYCIE<br>/MIN. | MOTOR<br>POWER | OVERALL<br>DIMENSIONS/MM. |
|---------|-------------------|----------|-------------------|-------------------------|-----------------------------|---------------------------|----------------|---------------------------|
| 4x2500  | 4                 | 2500     | 1.5               | 100                     | 20-500                      | 18                        | 5.5            | 3200x1600x1600            |
| 4x3200  | 4                 | 3200     | 1.5               | 100                     | 20-500                      | 15                        | 5.5            | 3900x1600x1600            |
| 4x4000  | 4                 | 4000     | 1.5               | 100                     | 20-600                      | 12                        | 7.5            | 4700x1600x1600            |
| 4x5000  | 4                 | 5000     | 1.5               | 100                     | 20-600                      | 12                        | 11             | 5800x1750x1850            |
| 4x6000  | 4                 | 6000     | 1.5               | 100                     | 20-600                      | 8                         | 11             | 6800x1750x1850            |
| 6x2500  | 6                 | 2500     | 1.5               | 100                     | 20-600                      | 15                        | 7.5            | 3200x1650x1800            |
| 6x3200  | 6                 | 3200     | 1.5               | 100                     | 20-600                      | 12                        | 7.5            | 3900x1650x1800            |
| 6x4000  | 6                 | 4000     | 1.5               | 100                     | 20-600                      | 10                        | 7.5            | 4700x1650x1800            |
| 6x5000  | 6                 | 5000     | 1.5               | 100                     | 20-600                      | 10                        | 11             | 5800x1800x1950            |
| 6x6000  | 6                 | 6000     | 2                 | 100                     | 20-600                      | 8                         | 11             | 6800x1800x1950            |
| 8x2500  | 8                 | 2500     | 2                 | 100                     | 20-600                      | 16                        | 7.5            | 3200x1700x1850            |
| 8x3200  | 8                 | 3200     | 2                 | 100                     | 20-600                      | 14                        | 7.5            | 3600x1700x1850            |
| 8x4000  | 8                 | 4000     | 2                 | 100                     | 20-600                      | 11                        | 7.5            | 4700x1700x1850            |
| 8x5000  | 8                 | 5000     | 2                 | 100                     | 20-600                      | 10                        | 11             | 5800x1900x2100            |
| 8x6000  | 8                 | 6000     | 2                 | 120                     | 20-600                      | 8                         | 11             | 6800x1900x2200            |
| 10x2500 | 10                | 2500     | 2                 | 120                     | 20-600                      | 12                        | 11             | 3200x1850x1900            |
| 10x3200 | 10                | 3200     | 2                 | 120                     | 20-600                      | 10                        | 11             | 3900x1850x1900            |
| 10x4000 | 10                | 4000     | 2                 | 120                     | 20-600                      | 8                         | 18.5           | 4700x1850x1900            |
| 10x5000 | 10                | 5000     | 2                 | 120                     | 20-600                      | 7                         | 18.5           | 5800x2000x2150            |
| 10x6000 | 10                | 6000     | 2                 | 120                     | 20-600                      | 6                         | 18.5           | 6800x2000x2500            |
| 12x2500 | 12                | 2500     | 2.5               | 120                     | 20-600                      | 11                        | 18.5           | 3200x2050x2150            |
| 12x3200 | 12                | 3200     | 2.5               | 120                     | 20-600                      | 10                        | 18.5           | 3900x2050x2150            |
| 12x4000 | 12                | 4000     | 2.5               | 120                     | 20-600                      | 8                         | 18.5           | 4700x2050x2150            |
| 12x5000 | 12                | 5000     | 2.5               | 120                     | 20-600                      | 7                         | 22             | 5800x2200x2200            |
| 12x6000 | 12                | 6000     | 2.5               | 120                     | 20-600                      | 6                         | 22             | 6800x2400x2600            |
| 16x2500 | 16                | 2500     | 2.5               | 120                     | 20-600                      | 10                        | 18.5           | 3200x2150x2250            |
| 16x3200 | 16                | 3200     | 2.5               | 120                     | 20-600                      | 9                         | 18.5           | 3600x2150x2250            |
| 16x4000 | 16                | 4000     | 2.5               | 120                     | 20-600                      | 8                         | 22             | 4700x2150x2250            |
| 16x5000 | 16                | 5000     | 2.5               | 120                     | 20-600                      | 6                         | 30             | 5800x2500x2500            |
| 16x6000 | 16                | 6000     | 2.5               | 120                     | 20-600                      | 6                         | 37             | 6800x2500x2700            |
| 20x2500 | 20                | 2500     | 3                 | 120                     | 20-600                      | 8                         | 22             | 3200x2250x2350            |
| 20x3200 | 20                | 3200     | 3                 | 120                     | 20-600                      | 7                         | 22             | 3900x2250x2350            |
| 20x4000 | 20                | 4000     | 3                 | 120                     | 20-600                      | 6                         | 30             | 4700x2350x2350            |
| 20x5000 | 20                | 5000     | 3                 | 120                     | 20-600                      | 5                         | 37             | 5800x2600x2700            |
| 20x6000 | 20                | 6000     | 3                 | 120                     | 20-600                      | 4                         | 37             | 6800x2600x2900            |
| 25x2500 | 25                | 2500     | 3                 | 120                     | 20-600                      | 6                         | 37             | 2300x2300x2500            |
| 25x3200 | 25                | 3200     | 3                 | 120                     | 20-600                      | 5                         | 37             | 3900x2300x2500            |
| 25x4000 | 25                | 4000     | 3.5               | 120                     | 20-600                      | 5                         | 37             | 4700x2500x2600            |
| 25x5000 | 25                | 5000     | 3.5               | 120                     | 20-600                      | 4                         | 45             | 5800x2700x2800            |
| 25x6000 | 25                | 6000     | 3.5               | 120                     | 20-600                      | 4                         | 45             | 6800x2700x2900            |



## Contacts



LT INDUSTRIAL GROUP CO.,LTD.

จำหน่ายโดย : บริษัท แอลที อินดัสเทรียล กรุ๊ป จำกัด

Call: (+66) 093-7262495 (HOTLINE )

Call: (+66) 099-1283030 (HOTLINE )

Web: [WWW.LTINDUSTRIALGROUP.COM](http://WWW.LTINDUSTRIALGROUP.COM)

E-mail : [LTINDUSTRIALGROUP.COM](mailto:LTINDUSTRIALGROUP.COM)



Line ID : [@LTINDUSTRIALGROUP](https://www.line.me/@LTINDUSTRIALGROUP)