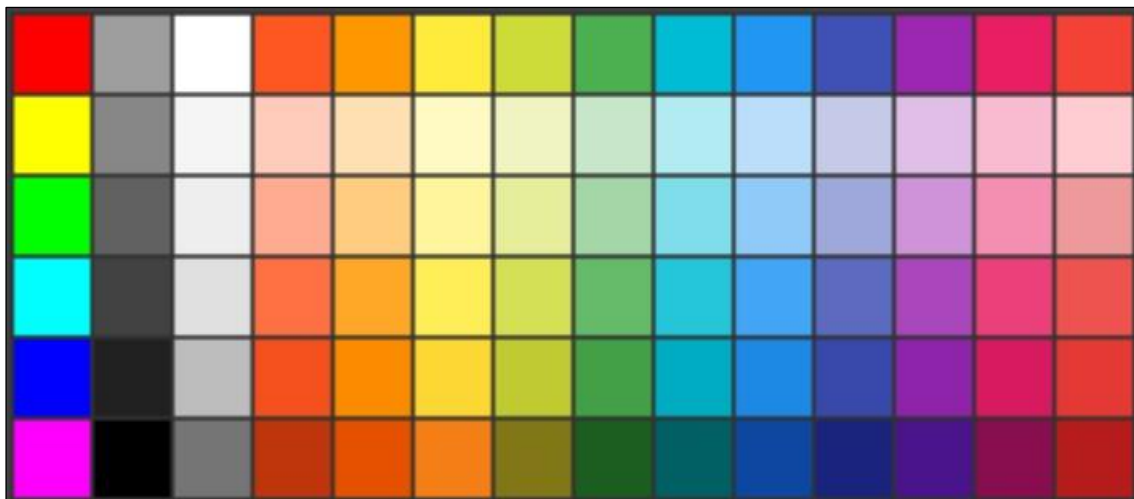


Automatic Paint spraying machine SSD-F1



- 1. Easy to use, speed spraying, fast and batch spray. Spray gun level and front and back position, angle can be adjusted according to the change of work piece. Spraying, size control, good flexibility.
- 2. Have a digital computer to control the operation Efficient Workpiece sprayed at the same time
- 3. More environmentally friendly - compared with traditional manual spraying, economical.
- 4. Explosion-proof, environmental protection, high safety performance, easy to use.
- 5. Operation, maintenance, easy maintenance.





Environmental protection, high safety performance, easy to use.

The paint nozzle is positioned, the angle can be adjusted according to the changes of the workpiece. Spraying, size control, good flexibility.



CONTROL

CNC PLC Control System

PARAMETERS

Model	Automatic paint spraying machine
Name	SSD-F1
Total Power	5 KW
Dimensions	2300*3300 mm.
Weight	800 Kg
Processing Length	1800mm
Processing Width	1220mm
Processing Height	20mm-150mm
Number of Spray	2
Gun Caliber	1.0mm
Spray method	5-Axis
Maximum angle	0-180° Automatic adjustment
Spray gun speed	0-20mm/s
Air pressure	0.6Mpa.
Air flow	1800L/min
Power Requirement	220V 50Hz
Control method	6 axis-touch screen





Contacts



LT INDUSTRIAL GROUP CO.,LTD.

จำหน่ายโดย : บริษัท แอลที อินดัสเทรียล กรุ๊ป จำกัด

Call: (+66) 093-7262495 (HOTLINE)

Call: (+66) 099-1283030 (HOTLINE)

Web: WWW.LTINDUSTRIALGROUP.COM

E-mail : LTINDUSTRIALGROUP.COM



Line ID : [@LTINDUSTRIALGROUP](https://www.line.me/@LTINDUSTRIALGROUP)