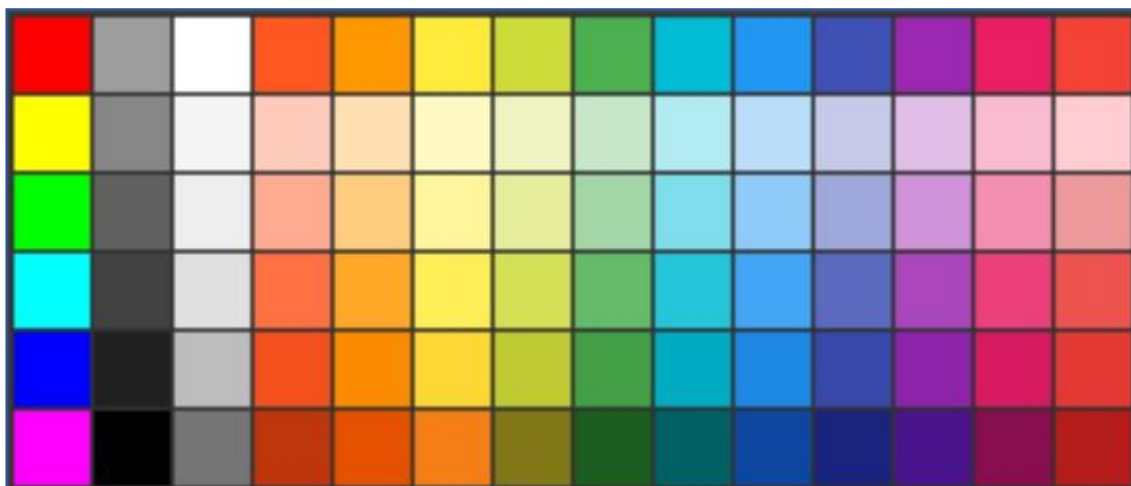
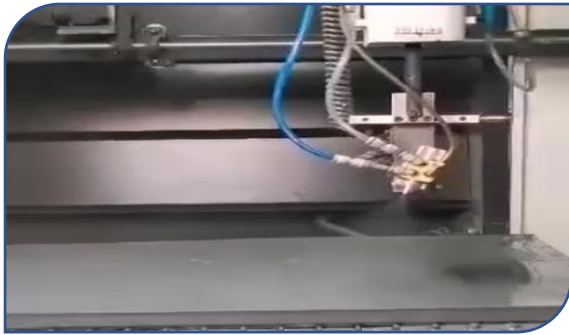


Automatic Paint spraying machine SSD-F3



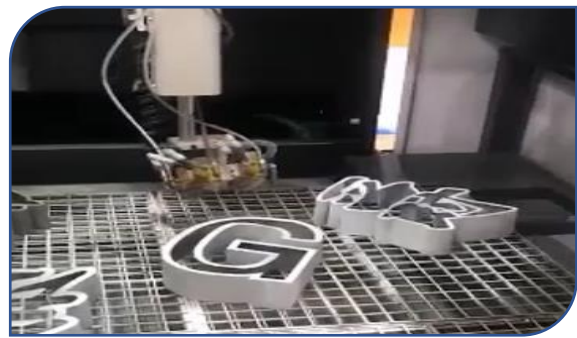
- 1. Easy to use, speed spraying, fast and batch spray. Spray gun level and front and back position, angle can be adjusted according to the change of work piece. Spraying, size control, good flexibility.
- 2. Have a digital computer to control the operation Efficient Workpiece sprayed at the same time
- 3. More environmentally friendly - compared with traditional manual spraying, economical.
- 4. Explosion-proof, environmental protection, high safety performance, easy to use.
- 5. Operation, maintenance, easy maintenance.





The paint nozzle is positioned, the angle can be adjusted according to the changes of the workpiece. Spraying, size control, good flexibility.

There are 3 spray nozzles, the speed is fast, and the spray is a 360 degree rotating adjustable spray.



With full cover paint booth
For more eco-friendliness

PARAMETERS

| Model | Automatic Paint spraying machine |
|-------------------|----------------------------------|
| Name | SSD-F3 |
| Total Power | 3KW |
| Dimensions | 2400*2100*2500mm. |
| Weight | 500 Kg |
| Processing Length | 950mm |
| Processing Width | 800mm |
| Processing Height | 10mm-60mm |
| Number of spray | 6 |
| Gun caliber | 1.00 mm (can be changed) |
| Spray method | 2-Axis |
| Maximum angle | 0-20° Automatic adjustment |
| Spray gun speed | 1-30mm/s |
| Air pressure | 0.8Mpa. |
| Air flow | 1800L/min |
| Power requirement | 220V 50Hz |
| Control method | 3 – axis touch screen |





Contacts



LT INDUSTRIAL GROUP CO.,LTD.

จำหน่ายโดย : บริษัท แอลที อินดัสเทรียล กรุ๊ป จำกัด

Call: (+66) 093-7262495 (HOTLINE)

Call: (+66) 099-1283030 (HOTLINE)

Web: WWW.LTINDUSTRIALGROUP.COM

E-mail : LTINDUSTRIALGROUP.COM



Line ID : [@LTINDUSTRIALGROUP](https://www.line.me/@LTINDUSTRIALGROUP)