

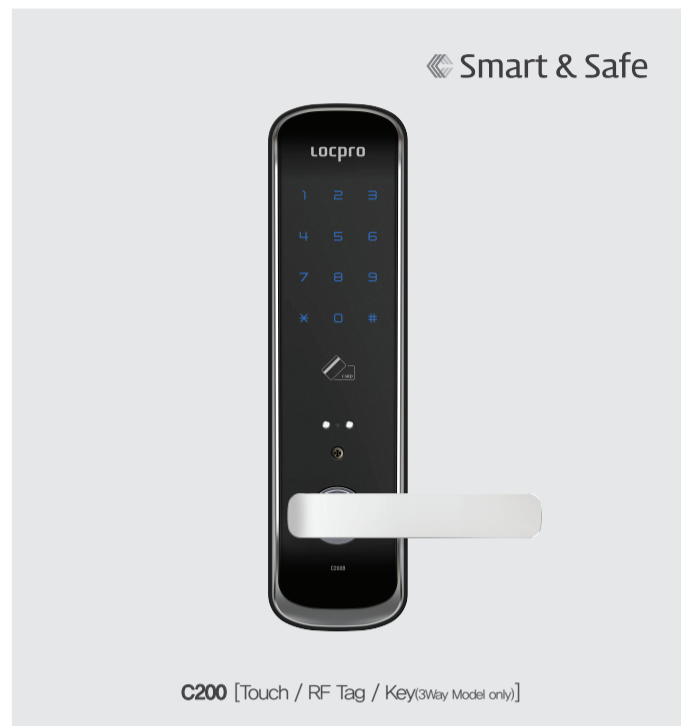


User Manual | C200 Series

[Touch / RF Tag / Key]

■ Please read the manual thoroughly in order to secure your safety and to use the product properly.

- Please use the RF Tag which is provided with door lock.
- If you use the RF Tag which is not provided with door lock, it may occur security problem.



- Premium Design Smart & Premium Design
- Fire-proof
- Electric Shock & Static Proof
- Passcode Hide

MEMO

Index

Introduction	
Safety Information	04
Parts	04
Components name	05
Basic Functions	
How to register passcode	05
How to register RF Tag	06
How to delete RF Tag	06
How to open door from inside	06
How to open door from outside	07
Additional Functions	
Outside force-lock function	07
Etiquette mode function	07
Inside force-lock/release function	07
Passcode hide function	08
Reset function	08
High temperature alert function	08
Intrusion alert function	08
Prank Prevention function	08
Deadbolt jamming alert function	08
Auto/Manual lock setting	09
Volume control function	09
Low battery alert function	09
Door open alert function	09
How to change batteries	10
Opening door with emergency battery	10
Register & Delete function of master passcode/RF Tag	10
Incapacitation function of usual user's passcode and RF Tag	10
Wireless communication module registration (Optional Product)	11
Remote controller Registration (Optional Product)	11
Checklist before calling for service	12
Specifications	12

Features

- Open/Close function**
 - Door open by entering passcode
 - Door open by RF Tag / Door open by emergency key
 - Door open by inside handle (Anti panic release function)
- Outside force-lock function**
 - Outside force-lock by passcode
- Auto close/Manual close setting function**
 - Setting auto close/manual close by switch
- Inside force-lock function**
 - Inside force-lock by program
- Others**
 - Etiquette mode, high temperature alert, intrusion alert, passcode hide, prank prevention, reset, master management, low battery alert, auto re-lock, door open alert

Safety Information

- This section contains user safety information. Please read carefully and use it properly.

Warning If not followed, user can be dead or seriously injured.

Caution If not followed, user can be injured or property damage can be caused.

Do not remove

- ▶ You should not remove any installed parts from the door. If you need to do so for any reason, please contact service center and consult.
- ▶ It can cause product malfunction or operation malfunction.

Do not spray water to the door lock or install it where it is exposed to water or damp.

- ▶ door lock is not water proof, thus water exposure can cause malfunctioning.

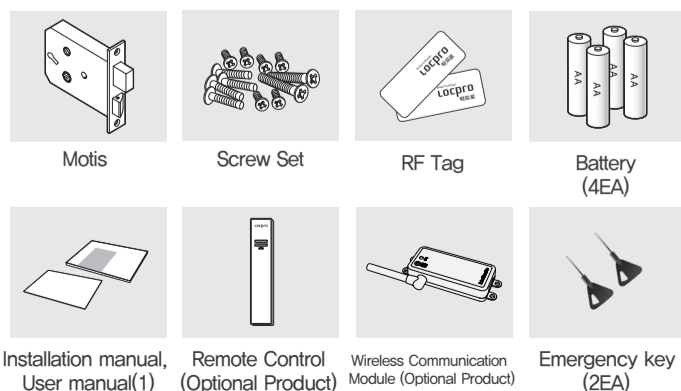
Do not install where it is exposed to snow or rain. Due to the extreme temperature difference of indoor and outdoor, it can cause dampening the door lock. Please use it after it dries.

- ▶ It can cause product malfunction or operation malfunction.

Make sure the door lock is properly installed and read manual for proper functioning.

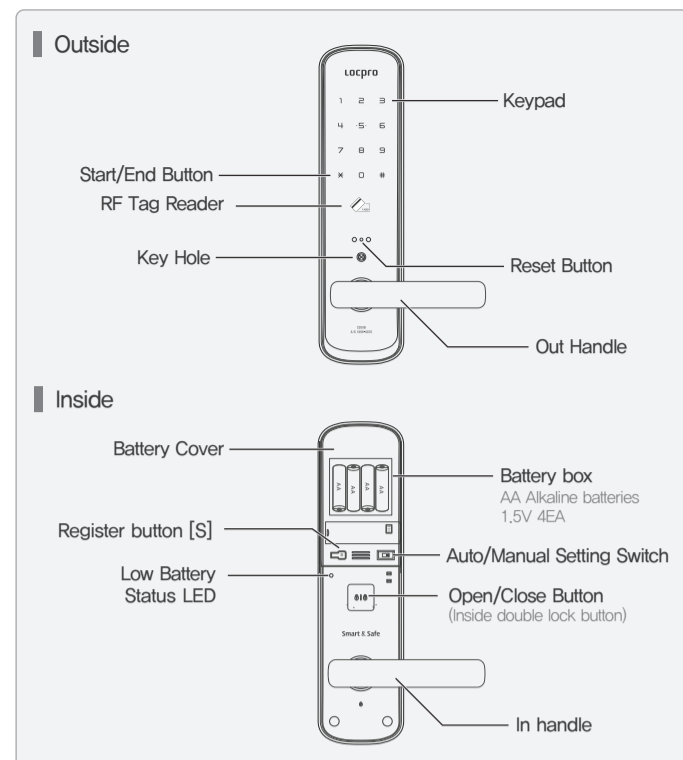
- ▶ It can cause product malfunction or operation malfunction.

Parts



※Types and quantity of RF Tag and emergency key can be changed according to a specification.

Components name



Basic Functions

How to register passcode

- Open battery cover and press register button [S].
- Input the desired passcode.
Passcode can be set 4~13 digits.
- Press * button to complete the procedure.
You will hear buzzer melody from door lock.

- When register mode is canceled, previous passcode is kept.
- When more than 14 digits are entered, it will not be registered.
- When less than 4 digits are entered, it will not be registered.
- When a new set of passcode is registered, existing passcode is deleted.
- While entering passcode, registration is canceled when there is no action for 60 seconds.

Basic Functions

How to register RF Tag

- Open battery cover and press register button [S].
- Place RF Tag on RF Tag reader.
You may register up to 50 RF Tags.
Repeat the process consecutively if you have more RF Tags to register.
- Press register button [S] to complete the procedure.

- When registration mode is canceled, existing RF Tag is kept.
- When 50 consecutive tags are registered, registration is completed automatically.
- When error occurs during the process, start over by pressing register button.
- Registration is canceled when there is no action for 60 seconds.
- You can not register the same RF Tag twice.
- When a new RF Tag registered, existing RF Tag is deleted.

How to delete RF Tag

- Open battery cover and press register button [S].
- Press 0 button on the keypad.
- Press register button [S] to complete.

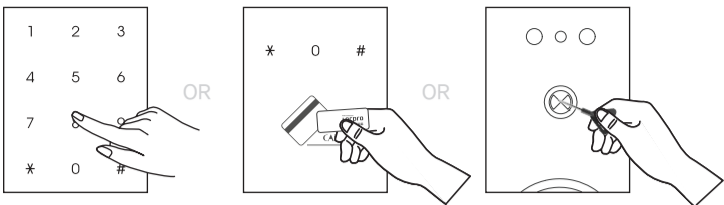
- If lost RF Tag, register new RF Tag after deleting all existing RF Tag information in system.
- When canceled, existing RF Tag is kept.
- Delete mode is canceled when there is no action for 60 seconds.

How to open door from inside

- Press down the inside handle to open while locked.
- Turning the manual open/close lever to open position while locked.

- Auto lock is activated when the door is not opened within 7 seconds.
- When outside force-lock is set, opening the door will set off intrusion buzzer alarm.
- When Prank Prevention function is set, Prank Prevention function is deactivated.

How to open door from outside



- Press registered passcode and * button after touching the keypad and getting backlight on.
If you want to use the passcode hide function, press imaginary number (Max. 16digits) then press the passcode.
Ex) Imaginary number (Max. 16digits)+Passcode+*
- Place RF Tag on RF Tag reader.
- Open the door using by emergency key.

- Auto lock is activated when the door is not opened within 7 seconds.
- When unregistered passcode is entered, you will hear error sound or see LED blinking.
- When incorrect passcode is entered 5 consecutive times, Prank Prevention function is activated.
- If passcode is not entered within 7 seconds after pressing more than 1 button or * button, then the mode is terminated.

Additional Functions

Outside force-lock function by passcode

If door is opened from inside, alarm will be occurred. It could be set once and automatically deactivated when door opens.

- When door is locked, touch keypad and then number pad backlight will get on.
- Press # button during 3 seconds after pressing the passcode.

Etiquette mode function

It allows turning on or turning off the buzzer sound when using digital door lock. It is one time function which automatically is deactivated after the regular procedure.

[Setting with passcode]

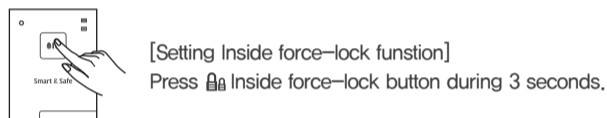
- When door is locked, touch keypad and then number pad backlight will get on.
- Press # button + passcode + * button.

[Setting with RF Tag]

- When door is locked, touch keypad and then number pad backlight will get on.
- Place RF Tag on RF Tag reader after pressing # button.

Inside force-lock/release function

This function prohibits someone from opening the door using passcode or RF Tag from outside. This function is useful during night time when extra caution for safety is required.



[Releasing Inside force-lock function with RF Tag]

- When door is locked, touch keypad and then number pad backlight will get on.
- Press # button after entering registered passcode.
- Place registered RF Tag on RF Tag reader, and then inside force-lock is released.

Additional Functions

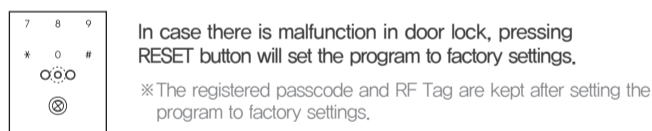
Passcode hide function

Passcode hide function is to prevent someone from noticing the actual passcode. This function gets rid of anxiety that there would be fingerprint on the pad.

[What is passcode hide function?]

In case of a risk of passcode exposure, this function can be useful. If you want to use this function, enter imaginary numbers (up to 16 digits) before entering the actual passcode.
Ex) Imaginary number should be up to 20 digits including passcode.

Reset function



High temperature alert function

It checks for open mode every 3 seconds and tries to open if not in open mode. It activates open mode to open even when inside or outside force lock function is activated. It only activates open mode through pressing any button inside. Alarm is deactivated when passcode is entered or RF Tag is placed.

[What is high temperature alert function?]

When high temperature is detected, deadbolt switches automatically to open from close and alarm goes off.

High temperature function activates at 60°C ± 5°C or higher and alarm goes off at least 80dB.

Intrusion alert function

Alarm goes off when someone try to open the door abnormally. Alarm is deactivated when passcode is entered or RF Tag is placed.

[What is intrusion alert function?]

When parts are separated improperly or someone try to invade by breaking the door, intrusion alert alarm goes off more than 80dB.

- 2 minutes alarm: [S] Button → 7 Button → [S] Button
- Unending alarm: [S] Button → 8 Button → [S] Button

Prank Prevention function

[What is Prank Prevention function?]

When incorrect passcode or RF Tag is used for 5 consecutive times, the system freezes for 30 seconds.

*In case of opening the door from inside, this function is deactivated.

Deadbolt jamming alert function

Try Open/Close 3 times. Waring sound goes off if the problem is not resolved after the trial.

[What is the deadbolt jamming alert function?]

In case of entrance door malfunctioning due to deadbolt being stuck at the strike or the door not being completely closed, buzzer sound goes off and keypad LED flickers.

You will hear buzzer sound 'beep beep beep beep'. It is deactivated when the door is properly closed.

Additional Functions

Auto/Manual lock setting

Door locks automatically certain time after the door opens or closes. Manual lock setting keeps the door open at all times.

[Auto lock setting]

- Open battery cover and set Auto/Manual switch to 'Auto [A]'.

*It determines to auto lock while switching over to close mode after open mode.

[Manual lock setting]

- Open battery cover and set Auto/Manual switch to 'Manual [M]'.

*It determines to manual lock while switching over to close mode after open mode. *To lock from outside, press more than 1 button on the keypad or press "*" button.

Volume control function

You can choose mute, low or high for the buzzer sound when using digital door lock.

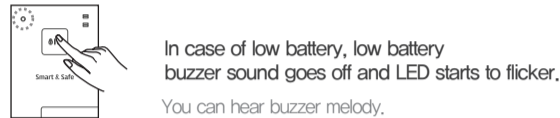
[Setting volume control]

- Open battery cover and press [S] button.
- From keypad, press 1 for mute/2 for low/3 for high.
- Press [S] button.

You can hear buzzer sound 'beep beep beep beep'. It is deactivated when the door is properly closed.

Low battery alert function

It is activated only after it detects low battery more than 3 times. It remains activated even after power resets. It is deactivated only after replacing batteries. Low battery voltage : 4.2V±0.3

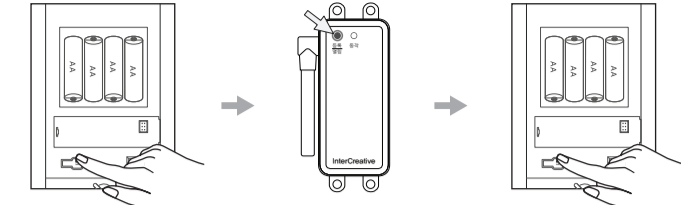


Door open alert function

- Door open alarm goes off when door opens under auto lock mode.
- Alarm occurs 2 times every 18 second.

Additional Functions

Wireless communication module registration (Optional Product)



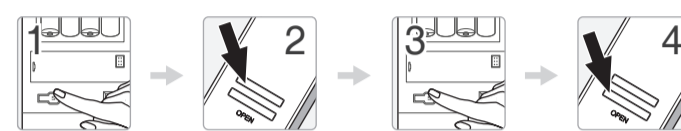
[Registering wireless communication module]

- Open battery cover and press [S] button.
 - Press register/open button on the wireless communication module.
 - Press [S] button.
 - Press open button on the wireless module to see if door lock operates properly.
- *Please register within 60 seconds.
*Can register 5pcs of wireless module continuously.

[Deleting wireless communication module]

- Open battery cover and press [S] button.
- Press the number 5 button.
- Press [S] button.

Remote controller Registration (Optional Product)



[To register the remote controller]

- Lift up the battery cover from the main body, then press the register button [S].
- Press and hold the register button on the remote controller for 4 seconds.
- Press the register button [S] on the main body.
- Press the open button on the remote controller to see if the door lock operates properly.



[To delete remote controller]

- Lift up the battery cover from the main body, then press the register button [S].
- Press 5 on the keypad.
- Press the register button [S]

Additional Functions

How to change batteries

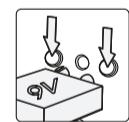
When you hear a buzzer melody, replace all of the batteries.

[Replacing batteries]

- Use 1.5V AA authentic alkaline batteries.
- Insert each battery according to the plus and minus sign inside the battery holder. Please be cautious since improper insertion of the battery may cause leakage or breakage.
- After battery life is over, replace all the batteries at the same time and do not mix new batteries with old ones.

- Door lock has a special design which prevents improper insertion of the battery by not allowing any actions if the battery was installed incorrectly.
- Passcode and RF Tag information are kept when batteries are being replaced.
- Make sure the door lock works properly by entering passcode after replacing batteries.

Opening door with emergency battery



When batteries are discharged, place 9V battery to emergency power port in order to use the passcode.

- This is to provide temporary power when the door lock is not functioning due to a complete discharge of batteries.
- Use it while the battery is still in contact with the port.
- When using emergency power, polarity of the battery does not matter.

Register & delete function of Master passcode/Master RF Tag

Register is complete automatically when 10pcs master RF Tags are consecutively registered. (Buzzer means 'be completed')
At delete mode, if place master RF Tag, all of the registered master RF Tags will be deleted. It is useful function for group management

- Register & delete on door open position
- Register of Passcode, RF Tag
[S]button → 9button → [S]button → 71button → # button → Master passcode → *button
[S]button → 9button → [S]button → 73button → # button → Master RF Tag → [S]button
- Delete of Passcode, RF Tag
[S]button → 9button → [S]button → 91button → # button → Master passcode → #button
[S]button → 9button → [S]button → 93button → # button → Master RF Tag → # button

Incapacitation function of usual user's passcode and RF Tag

- When door is locked, touch keypad and then number pad backlight will get on.
→ 82 Button → # Button → Master passcode → *Button
- When door is locked, touch keypad and then number pad backlight will get on.
→ 82 Button → # Button → RF Tag recognition
- Incapacitation function is deactivated. When door is open using master passcode or RF Tag,

Specifications

Problem	Check	Solution
When entering passcode, buzze melody goes off.	It's time to replace batteries.	Replace all of the batteries with alkaline batteries.
After entering passcode, door doesn't open.	It's time to replace batteries.	Use 9V battery to open the door and then replace all of the batteries.
When operating Open/Close, motor stops after a while then 'bleep bleep bleep' buzzer sound comes on.	There is a deadbolt jam caused by improper hinging of the door and frame.	Use door closer to adjust the door and the frame.
It freezes while entering passcode.	In case incorrect passcode is entered 5 times, it goes to safe mode for 60 seconds.	Try again after 1 minute.
9V battery does not work when used as emergency power.	9V battery connection is bad.	Reconnect 9V battery and try again.
Door does not lock automatically after closing the door.	Sensor may be detected or magnet is displaced.	Please call A/S center and request service. Meanwhile switch to manual mode to use the lock properly.
When Open/Close the door, it feels like there is something stuck or it is shaky	Bolt for motor or striker may be loose.	Check the bolts for motor and striker and tighten it if loose. Use super glue if necessary.

Model Name	C200 Series
Rated voltage	6Vdc (4EA 1.5V AA Type Alkaline Batteries)
Type	Electronic & Mechanical (Passcode, RF Tag & Key)
Weight	3.3Kg (Include packing)
Usage Temperature	-20°C~60°C
Sensor activating Temperature	60°C ±5°C
Product size/Material (width x length x depth)	Outbody 72(W) x 295(H) x 17.5(D) / AI diecasting Inbody 72(W) x 294(H) x 32(D) / RF ABS / AI diecasting
Battery life	1 year if used 10 times per day Battery life depends on battery quality, usage frequency or usage environment
Emergency power	9V Alkaline battery(6LF22) 1EA (Optional Product)
Product type	Direct current / Fire-proof / Temp. sensor / Key / Digital door lock (D-F-T-K-M)

Equipment name	Wireless equipment for RF ID / USN
Frequency	13.56 MHz
Signal Type	A1D+F1D
Modulation Type	ASK+FSK
Certification number	MSIP - CMM - ICQ - C200B

*This product cannot carry on perfect security function. You may want to install separate security system.

*Contents in user manual can be changed without notifying users in order to improve product quality or service.